



**PHFI**  
**INSTITUTE of**  
**PUBLIC HEALTH**  
**SCIENCES**

Hyderabad | Bhubaneswar | Bengaluru

**India's Premier Public Health University**

**India at the Core.**  
**Global in Vision.**  
**Public Health in Action.**





## About us...

The PHFI Institute of Public Health Sciences (PHFI IPHS), Deemed to be University, is India's premier institution dedicated exclusively to public health education, research, and practice.

Rooted in the legacy of the Public Health Foundation of India (PHFI), PHFI IPHS builds upon the pioneering work of Indian Institutes of Public Health across the country. The University currently encompasses the campuses at Hyderabad, Bengaluru, and Bhubaneswar, while PHFI's other institutes, including IIPH Gandhinagar, IIPH Delhi and IIPH Shillong, continue to strengthen the national public health network. Together, these institutes form a pan-India ecosystem of teaching, research, and practice, supported by a national pool of eminent faculty and public health experts, ensuring that PHFI IPHS draws on the collective strength of India's leading public health institutions.

PHFI IPHS currently offers postgraduate programs designed to equip students with the knowledge, skills, and leadership to tackle India's and the world's pressing public health challenges.

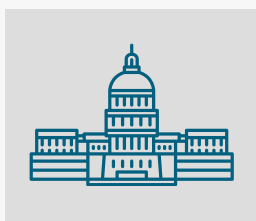
## Globally Ranked, Locally Committed

Our sponsoring body - PHFI was recently ranked #2 in the world by the Public Health Academic Ranking (PHAR), surpassing leading institutions such as Harvard and Johns Hopkins. With academic autonomy, innovative curricula, and a nationwide network of expertise, PHFI IPHS is shaping the next generation of leaders in public health.



The Vision of PHFI IPHS is to be a leading institution in India and globally, advancing public health through excellence in education, research, innovation, and policy engagement, and to develop a skilled, ethical, and visionary workforce capable of addressing current and emerging health challenges, improving population health, and fostering equitable, resilient, and healthy communities.

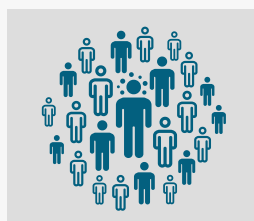
PHFI Institute of Public Health Sciences (Deemed To be University)  
**REPRESENTS**  
Partnership for Public Purpose



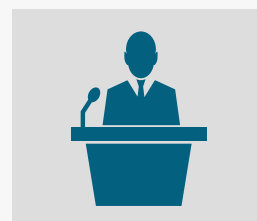
**Government**



**Academia**



**Civil Society  
Organization**



**Industry Leaders**

**FOCUS AREAS OF IIPH-H**

**Infectious  
Diseases**

**Non-  
Communicable  
Diseases**

**Maternal &  
Child Health**

**Environmental  
Health &  
Climate  
Change**

**Mental  
Health &  
Disability**

**Digital Public Health**

**Health Technologies**

**Health Workforce Planning and Development**

**Health Policy, Systems and Multi-sector Determinants**



**Prof. Srinath Reddy**  
**Chancellor**

Founding President - PHFI  
Former Head - Dept of Cardiology, AIIMS

## MESSAGE FROM THE CHANCELLOR

Public health is the foundation upon which healthy societies are built, and it is central to the well-being, productivity, and equity of communities. At the PHFI Institute of Public Health Sciences (Deemed to be University), we are committed to advancing this vision through world-class education, cutting-edge research, and impactful policy engagement.

It is a privilege to serve as Chancellor of an institution that is shaping the future of public health in India and beyond. PHFI IPHS draws upon a pan-India network of institutes, eminent faculty, and global collaborations, providing students with unparalleled opportunities to engage with pressing health challenges and innovative solutions.

As public health challenges evolve - from pandemics and non-communicable diseases to the digital transformation of health systems - the need for skilled, visionary leaders has never been greater. PHFI IPHS is committed to nurturing professionals who are not only technically competent but also socially conscious, ethical, and ready to drive transformative change in health systems and policy.

I invite you to join us in this mission. Together, we can advance knowledge, improve health outcomes, and create equitable, resilient communities across India and around the world.



**Dr. Vishnu Vardhana Rao**  
**Vice-Chancellor (Officiating)**

ICMR-Chair  
Director retd. ICMR-NIMS, New Delhi

## MESSAGE FROM THE VICE-CHANCELLOR

At the PHFI Institute of Public Health Sciences (Deemed to be University), we believe that public health is the foundation of societal progress. As one of India's premier institutions dedicated exclusively to public health, we are committed to nurturing the next generation of professionals who will lead transformative change in healthcare systems, policies, and practices. Our mission is to empower students with the knowledge, skills, and vision necessary to address the complex health challenges faced by communities, both locally and globally.

I am happy to announce the commencement of our flagship program — the Master of Public Health (MPH) — which continues to set the benchmark in public health education by combining academic rigor with real-world exposure. As we move ahead, we look forward to launching additional programs, including the Master of Healthcare Administration (MHCA), MSc Digital Public Health and MSc One Health to equip students with specialized skills in healthcare management and digital health innovation.

The success of our alumni — contributing across epidemiology, health systems management, healthcare leadership, digital public health, policy advocacy, and research — reflects our commitment to excellence. As an educational arm of PHFI, ranked #2 globally, PHFI IPHS continues to set the standard for public health education and research, delivering meaningful solutions to pressing health challenges.

I invite you to explore our programs and join a vibrant community of professionals dedicated to advancing public health, creating impact, and improving the health and well-being of populations worldwide. Together, we can build a healthier and more equitable future for all.





## Unlock Your Potential in Public Health

At PHFI IPHS (Deemed to be University), we offer a suite of cutting-edge programs designed to equip public health professionals with the knowledge, skills, and practical experience needed to tackle today's complex health challenges. Explore our programs below and choose the path that aligns with your career ambitions.

### Master of Public Health (MPH)

#### Key Highlights:

- Duration: 2 years (full-time)
- Eligibility: Graduates from diverse fields such as Medicine, Dentistry, Life Sciences, and Social Sciences etc
- Career Pathways: Public health consultant, epidemiologist, policy analyst, health program manager and many more
- Offered at : Hyderabad, Bhubaneswar & Bengaluru

### Master of Healthcare Administration (MHCA)

#### Key Highlights:

- Duration: 2 years (full-time)
- Eligibility: Graduates from diverse fields such as Medicine, Dentistry, Life Sciences, and Social Sciences etc
- Career Pathways: Public health consultant, epidemiologist, policy analyst, health program manager and many more
- Offered at: Hyderabad, Bhubaneswar & Bengaluru

### Master of Science - Digital Public Health (M.Sc. DPH)

#### Key Highlights:

- Duration: 2 years (full-time)
- Eligibility: Graduates from diverse fields such as Medicine, Dentistry, Life Sciences, and Social Sciences etc
- Career Pathways: Public health consultant, epidemiologist, policy analyst, health program manager and many more
- Offered at : Hyderabad, Bhubaneswar & Bengaluru

### Master of Science - One Health (M.Sc. OH)

#### Key Highlights:

- Duration: 2 years (full-time)
- Eligibility: Graduates from diverse fields such as Medicine, Dentistry, Life Sciences, and Social Sciences etc
- Career Pathways: Public health consultant, epidemiologist, policy analyst, health program manager and many more
- Offered at : Hyderabad, Bhubaneswar & Bengaluru

For more details log on to <https://phfiiphs.ac.in>

# THE CURRICULUM

## MASTER OF PUBLIC HEALTH (MPH)

The course is designed as a 2-year full-time on-campus program, spanning 4 academic semesters of total 80 credits, including internship and dissertation. While the students work for their course during the semester, the inter-semester vacations will be utilized for internships. One semester will usually last for 16-18 weeks and one credit is equivalent to 1 hour of lecture or 2 hours of practical/laboratory/fieldwork per week for the semester.

### SEMESTER - 1

- Principles and Practice of Public Health
- Social and Behavioural Sciences in Health
- Epidemiology
- Biostatistics & Data Management
- Health Systems & Policy
- Health System Exposure - Field visits

### SEMESTER - 3

- Health Communication and Health Promotion
- National Health Programs (MCH, NCD, NTEP, NVBDCP, HIV, etc)
- Health Technology Assessment
- Seminars on Emerging Issues in Public Health: Gender Vulnerable Population

#### **Electives (choose any as offered)**

- Advanced Epidemiology, Biostatistics & Data Management
- Non-Communicable Disease - Epidemiology
- Public Health Disability
- Public Health Surveillance
- Advanced Public Health Nutrition
- Health Systems & Health Policy
- Maternal & Child Health
- Community Mental Health
- Tribal Health & Vulnerable Population

### SEMESTER - 2

- Demography and Population Sciences
- Health Economics and Health Financing
- Public Health Nutrition
- Environmental and Occupational Health (Climate Change, One Health, Disaster Preparedness)
- Digital Health and Health Information Systems
- Public Health Management and Project Planning
- Research Methods (Quantitative & Qualitative)
- Ethics in Research & Public Health Laws
- Internship

### SEMESTER - 4

- Dissertation
- Elective Specialty Project



# THE CURRICULUM

## MASTER OF HEALTHCARE ADMINISTRATION (MHCA)

The MHCA program is designed as a 2-year full-time on-campus program, spanning 4 academic semesters with a total of 82 credits, including internship and dissertation components. Students will engage in coursework and practical assignments during each semester, while inter-semester vacations are dedicated to internships in hospitals, healthcare organizations, and health systems. Each semester typically lasts 16–18 weeks, and one credit is equivalent to 1 hour of lecture or 2 hours of practical/fieldwork per week for the semester.

### SEMESTER - 1

- Principles and Practice of Public Health
- Social & Behavioural Sciences in Health-I
- Environmental & Occupational Health-I
- Healthcare Systems & Health Policy (NHP, SDGs)
- Epidemiology-I
- Research Methods
- Biostatistics, Data Management & Demography-I

### SEMESTER - 3

- Seminar & Field Visits
- Contemporary Issues in Global Public Health
- International Health Systems Comparison
- IHR 2005/2024

#### Tracks

- Healthcare Quality & Performance Improvement,
- Quality and uses of Health Information Systems (Advanced Healthcare Analytics and Decision-Making)
- Human Resource Management in Healthcare,
- Strategic Management, Planning & Marketing and Communication in Healthcare organizations (NHP, SDG)
- Healthcare Financial Management & Budgeting,
- Medical Supply & Logistics Management,
- Health System Resilience,
- Advanced Healthcare Financing & Insurance,
- Health Policy Analysis,
- Healthcare Law & Compliance,
- Medical Tourism.

### SEMESTER - 2

- Public Healthcare Law & Ethics
- Monitoring & Evaluation
- Leadership & Communication Skills
- Research Methods & Proposal Writing
- Health Informatics / Digital Health
- Introduction to Disaster Preparedness & Management
- Health Policy & Management (Health Economics, Healthcare Financing)

#### Electives (choose any as offered)

- Social & Behavioural Sciences II
- Epidemiology II
- Environmental & Occupational Health II
- Biostatistics & Data Management II
- Introduction to One Health
- Internship

### SEMESTER - 4

- Dissertation / Capstone Project
- Project Development & Project Management
- Leadership & Organizational Behaviour

# THE CURRICULUM

## M.Sc. Digital Public Health (DPH)

The M.Sc. Digital Public Health is a 2-year, full-time on-campus program delivered over 4 academic semesters with a total of 88 credits, including an internship and a dissertation. Students complete a blend of classroom instruction, laboratory work, and field-based digital health assignments in each semester. Inter-semester breaks are reserved for an 8-credit, two-month internship with government agencies, health-tech companies, NGOs, or healthcare organizations, providing hands-on exposure to digital public health tools and data analytics. Each semester typically spans 16–18 weeks, and one credit corresponds to 1 hour of lecture or 2 hours of practical or fieldwork per week for the duration of the semester.

### SEMESTER - 1

- Principles and Practice of Public Health
- Fundamentals of Digital Transformation, Digital Health, Digital Public Health & AI
- Healthcare Systems & Health Policy
- Epidemiology I
- Research Methods
- Biostatistics, Data Management & Demography -I

#### Electives (chose any as offered)

- Social & Behavioural Sciences in Health
- Environmental & Occupational Health

### SEMESTER - 3

- Leading Health Systems Through Digital Innovation
- Smart Surveillance: AI-Driven Monitoring in Digital Health Systems
- Digital Public Data Management using AI and Big Data Analytics
- Digital AI Tools for Public Health Data
- Applied Computational Programming using R and Python
- Introduction to NLP and Deep learning in healthcare
- Basics of imaging informatics
- Role of GIS in Strengthening Public Health Systems
- Seminars & Field Trips

### SEMESTER - 2

- Ethics & Public Health Laws
- Monitoring & Evaluation
- Leadership & Communication Skills
- Research Methods & Proposal Writing
- Epidemiology II
- Role of AI and Machine Intelligence in Public Health
- Digital Health Data Management Policy
- Biostatistics & Data Management II
- Introduction to Werable Technologies & IoT in Public Health
- Internship

### SEMESTER - 4

- Dissertation – Digital Public Health
- Artificial Intelligence in Public Health: Future Directions and Applications
- Digital Health Data: Ethics, Privacy & Governance
- Digital Epidemiology: Real-Time Surveillance and Response
- Digital Supply chain management
- Global Digital Health



# THE CURRICULUM

## M.Sc. One Health (OH)

The M.Sc. One Health is a 2-year, spanning 4 academic semesters of total 80 credits, including internship and dissertation. While the students work for their course during the semester, the inter-semester vacations will be utilized for internships. One semester will usually last for 16-18 weeks and one credit is equivalent to 1 hour of lecture or 2 hours of practical/laboratory/fieldwork per week for the semester.

### SEMESTER - 1

- Principles and Practice of Public Health
- Social & Behavioural Sciences in Health -I
- Environmental & Occupational Health -I
- Healthcare Systems & Health Policy
- Epidemiology -I
- Research Methods
- Biostatistics, Data Management & Demography -I

### SEMESTER - 3

- Seminar on Field Visit
- Contemporary issues in global public health
- Importance of multi-sectoral approach to health & systems thinking in OH
- Emerging Infectious Diseases and Antimicrobial Resistance
- One Health Application in Management of zoonotic Diseases
- Applied Epidemiology & Public Health in OH Research
- One Health Policy
- Thesis proposal submission
- Data in One Health Seminars & Field Trips
- Food safety and food borne disorders

### SEMESTER - 2

- Public Healthcare Law and Ethics
- Monitoring & Evaluation
- Leadership & Communication Skills
- Research Methods & Proposal Writing
- Social-behavioural Sciences in Health – II
- Epidemiology II
- Environmental & Occupational Health - II
- Biostatistics & Data Management - II
- Health Informatics
- Introduction to Disaster Preparedness & Management
- Introduction to One Health
- Internship

### SEMESTER - 4

- Dissertation
- National health programmes related to OH
- Programme planning, implementation and evaluation
- Workshops in One Health (Blog/print/journal etc) Digital Supply chain management

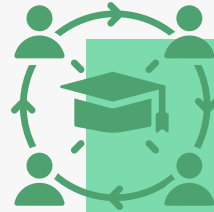
## WHY SHOULD YOU JOIN US



**Educational Arm  
of PHFI, Ranked  
#2 Globally**



**Experienced  
Faculty**



**Strong  
Alumni Network**



**Placement  
Opportunities**



**Strong  
Network &  
Collaborations**



**Diverse  
Student  
Community**



**Campus  
Life**



**PAN India  
Presence**





## CAMPUS LIFE & INFRASTRUCTURE

The PHFI IPHS (Deemed to be University) campus offers a vibrant and supportive learning environment with state-of-the-art infrastructure. Our current facilities include a well-designed academic block with spacious classrooms equipped with modern teaching tools to foster interactive learning. The campus also features a well-stocked library, providing students access to a wide range of academic resources, and a dedicated computer lab to support their research and academic needs.

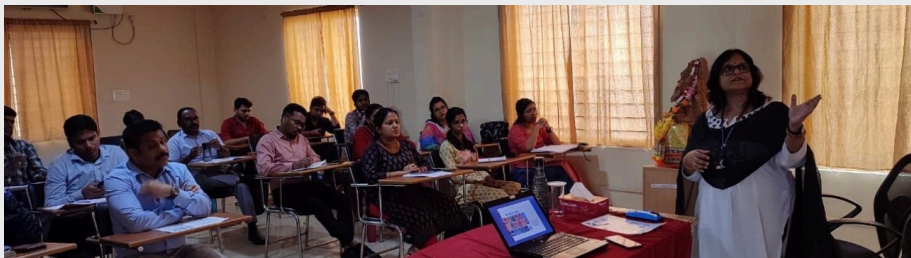
IIPHH's multi-purpose hall serves as a versatile space for conferences, seminars, and student activities. PHFI IPHS (Deemed to be University) commitment to cutting-edge research is reflected in our Centres of Excellence, which serve as hubs for innovation and impactful public health solutions.

Looking ahead, PHFI IPHS (Deemed to be University) expanding its infrastructure with a state-of-the-art 1,70,000 sq. ft. Academic and Research Block. Construction has commenced, and this advanced space will offer world-class facilities to further elevate our teaching and research capabilities, ensuring an unparalleled academic experience.





## CAMPUS LIFE & INFRASTRUCTURE





## EXPANDING OUR CAMPUS FOR FUTURE READY PUBLIC HEALTH EDUCATION

We are committed to building a future-ready campus that will shape the next generation of public health leaders and researchers. As part of our ambitious campus expansion, we are initiating the next phase of development with the addition of a 1,70,000 sq. ft. state-of-the-art Academic and Research Block at our Headquarters in Hyderabad. We are also working on expanding our campus at Bhubaneswar and Bengaluru campuses.

Our upcoming campus infrastructure at all our campuses will not only significantly expand our physical infrastructure but will also enhance our capacity to deliver cutting-edge education, research, and innovation in public health.

The upcoming facility will feature modern, technology-enabled classrooms designed to provide an immersive learning experience. It will also house advanced research laboratories, offering our faculty and students access to the latest tools and resources needed to conduct impactful research. The block will include collaborative spaces and meeting rooms, fostering interdisciplinary work and partnerships, as well as dedicated areas for student interaction and extracurricular activities to create a vibrant campus life.

This phase of development is a key milestone in our long-term vision of building a world-class public health campus.





## SCHOLARSHIPS

PHFI IPHS (Deemed to be University) is committed to making quality public health education accessible to deserving students. We offer a range of scholarships to support our students in pursuing their academic and professional goals. The available scholarships include:

### **TG e-PASS Scholarship**

- Eligible students from the state of Telangana can apply for financial assistance through the Telangana State Electronic Payment & Application System of Scholarships (TG e-PASS). This government-funded initiative aims to provide support to economically disadvantaged students, covering tuition fees and additional academic expenses.

### **National Scholarship Portal (NSP)**

- Students across India can apply for various centrally and state-funded scholarships via the National Scholarship Portal (NSP).

### **Dr. P G Tulpule Scholarship Fund**

- The Dr. P G Tulpule Scholarship Fund seeks to encourage students to choose, pursue, and advance careers in public health, with a specific focus on public health nutrition and allied areas. This scholarship is available as full or partial financial support for students enrolling in the Master of Public Health (MPH) and the Post Graduate Diploma in Public Health Management (PGDPHM) courses at PHFI. The scholarship aims to nurture future leaders in public health by reducing financial barriers and motivating them to contribute meaningfully to these critical fields.

### **Procter & Gamble Scholarship**

- For encouraging students belonging to socially and economically deprived communities to develop their career in public health, a P & G Health Scholarship Fund has been set up under the aegis of Public Health Foundation of India. P & G Health Scholarship Fund has been set up for the eligible candidates selected for MPH programmes.





## PLACEMENTS

At PHFI Institute of Public Health Sciences (Deemed to be University), we are building on the strong foundation and legacy established by IIPH's at Hyderabad, Bhubaneswar and Bengaluru. Our transition to a university marks an important milestone, but our long-standing ethos of excellence in public health education, research, and sector engagement continues uninterrupted.

For over a decade, IIPH cultivated deep relationships with government agencies, non-profit organizations, international development bodies, and private sector partners. This legacy of collaboration now continues and strengthens under PHFI IPHS (Deemed to be University). The trust and credibility earned by IIPH over the years ensure that our graduates remain highly valued within the public health ecosystem.

Graduates from our earlier programmes have been consistently sought after for their rigorous training, research skills, and leadership potential. They have gone on to serve in influential roles at renowned organizations such as the World Health Organization (WHO), United Nations Children's Fund (UNICEF), Centers for Disease Control and Prevention (CDC), national and state health departments, leading NGOs, and public health research institutions.

Building on this foundation, PHFI IPHS is strengthening and broadening its industry engagement strategy to match the evolving needs of the health sector. We are enhancing internship opportunities, expanding field-learning platforms, and establishing a dedicated Career Services and Industry Relations unit to guide students throughout their academic and professional journey.

By carrying forward the values, partnerships, and reputation built by IIPH Hyderabad, PHFI IPHS remains committed to enabling our graduates to launch impactful careers and contribute meaningfully to India's and the world's public health priorities.







**PHFI**  
**INSTITUTE *of***  
**PUBLIC HEALTH**  
**SCIENCES**

Hyderabad | Bhubaneswar | Bengaluru

For more details about our programs, admissions, and campus facilities,  
please visit our website at <https://phfiiphs.ac.in>

If you have any  
questions or need further information, feel free to reach out to us  
via email at [info@phfiiphs.ac.in](mailto:info@phfiiphs.ac.in) (or) [info@iiphh.org](mailto:info@iiphh.org)

or

contact us at 040 2400 6000 / +91 72070 63322